

BENZ WETLAND BANK

Faribault County, MN 

WATER MANAGEMENT OPPORTUNITY

Excessive flooding on private agricultural farmland required repairs to the public ditch and tile system. Historic records revealed that the property was formerly a shallow lake drained for crop production. Conventional farming practices and a failed aged tile branch resulted in routine flooding and caused the peat soils to subside, exposing non-repairable tile in multiple areas. Project obstacles included:

- Local, state, and federal regulation
- Multiple landowners
- Upstream drainage preservation needs
- Public drainage system
- Overhead power lines

WETLAND BANK SOLUTION

To meet regulations and drainage standards, reduce flooding, and maintain upstream farmland drainage in the watershed, ISG disabled the existing tile and restored the 154-acre agricultural site into a wetland. The effort included:

- 106 wetland credits
- 92-acre wetland basin
- 62-acre upland buffer
- 60–93% peak flow reductions
- Large-scale planting with native seed mixes
- Diverse native plant communities
 - Fresh (wet) meadow
 - Shallow marsh
 - Deep marsh
 - Upland forest and prairie

INSIGHTS + LESSONS LEARNED

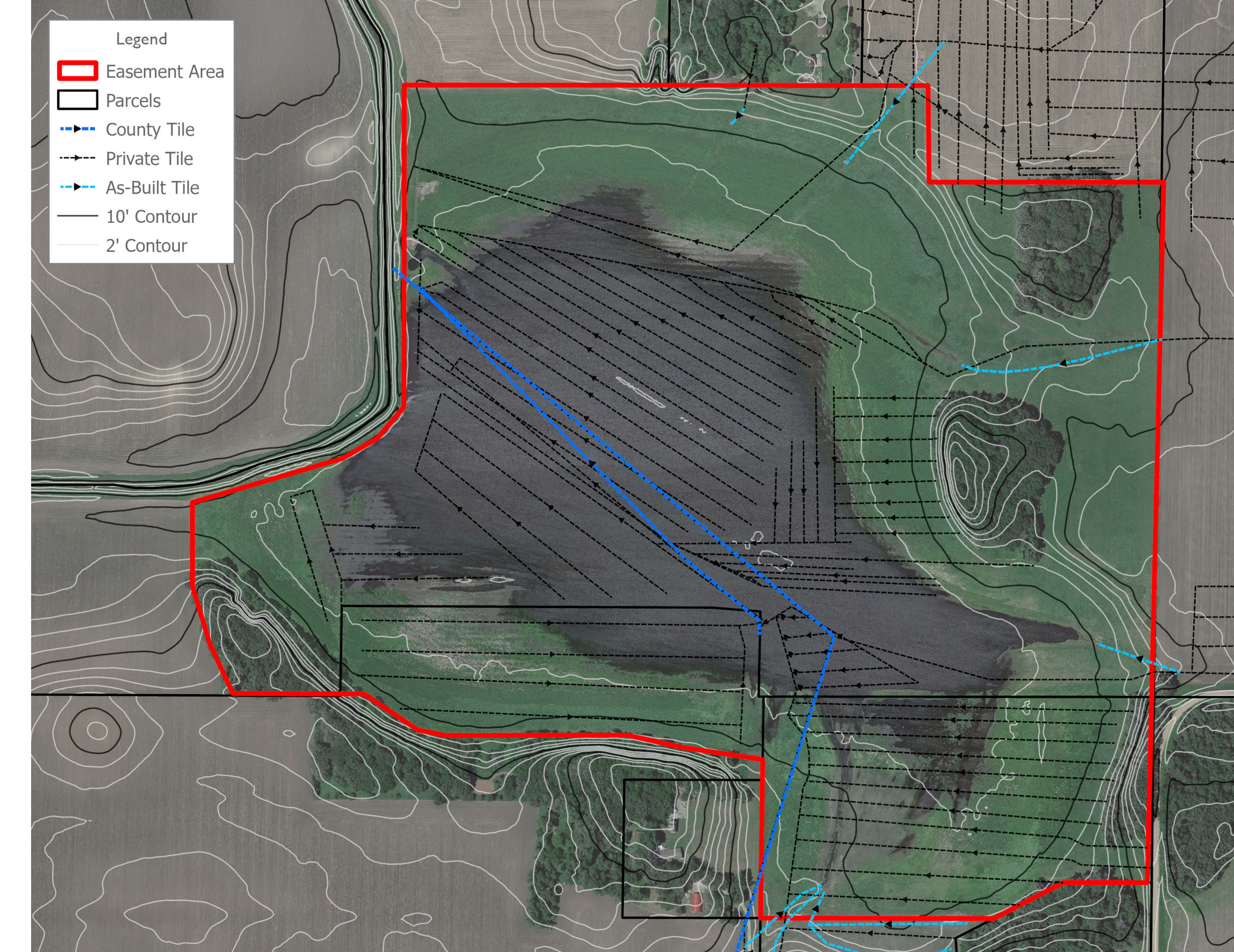
- Landowner engagement is paramount
- Agency coordination is vital to project success
- Design with flexibility and compromise to provide solutions for all involved



Before



After



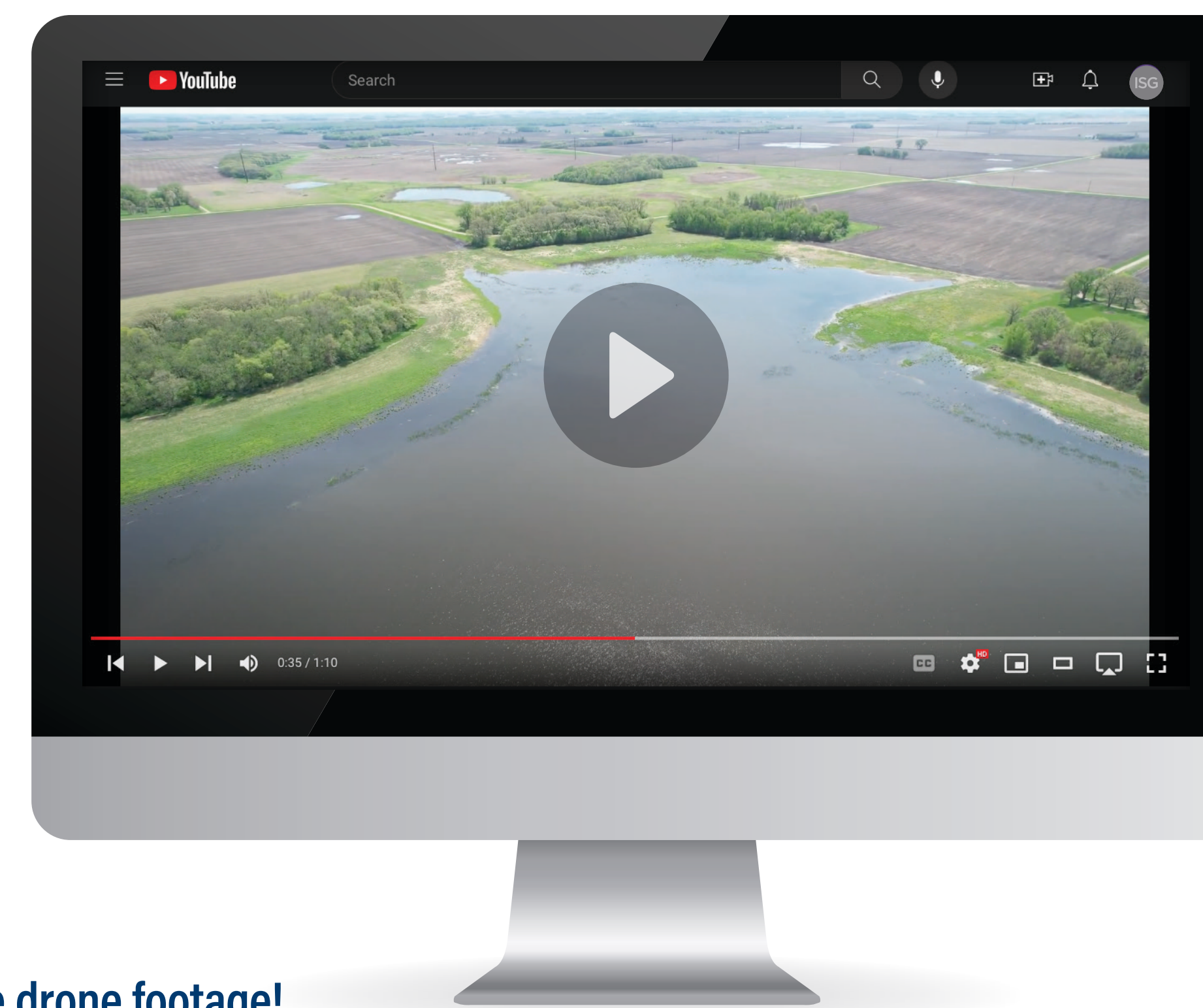
HOW CAN ISG HELP YOU?

ISG is proud to transform damaged drainage systems and create sustainable solutions for our natural resources through wetland restoration and mitigation banking projects. These projects:

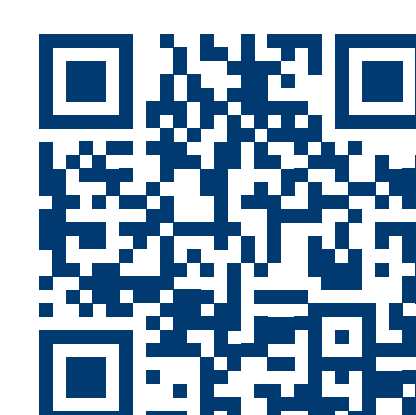
- Generate wetland and stream mitigation banking credits
- Improve water quality
- Reduce downstream flooding impacts
- Restore wildlife habitat
- Improve agricultural drainage

ISG, an architecture, engineering, environmental, and planning firm, serves clients from 13 Midwest locations, including Green Bay, La Crosse, and Milwaukee. As partners for success, ISG's team provides the full spectrum of environmental services, including:

- Wetland bank/restoration design
- Wetland delineation
- Wetland impact permitting
- Wetland functional assessments
- Wetland monitoring
- Ecological and habitat restoration
- Water resource engineering
- Stream mitigation design and permitting



Watch the drone footage!
bit.ly/Loren-Benz-Drone_ISG



Learn more about our services and additional projects!
www.isginc.com/water-business-unit



Nick McCabe, *Senior Environmental Specialist*
920.434.2128
Nick.McCabe@ISGInc.com

OUR LOCATIONS

- Green Bay, WI
- La Crosse, WI
- Milwaukee, WI
- Bloomington, MN
- Mankato, MN
- St. Louis Park, MN
- Rochester, MN
- Des Moines, IA
- Storm Lake, IA
- Waterloo, IA
- Pierre, SD
- Sioux Falls, SD
- Rogers, AR